



HSS Drill Bits DIN 338 N

HSS DIN 338 N Standard Finish

Straight shank twist drill, short series, right hand, roll forged, steam tempered, 118° universal point shape, packing in plastic bags of 10 pcs (up to 8.0 mm) or 5 pcs (from 8.5 mm).



HSS CO DIN 338 N Cobalt Finish

Straight shank twist drill, short series, right hand, 5% Co, ground from solid, gold finish packing in plastic bags of 10 pcs (up to 8.0 mm) or 5 pcs (from 8.5 mm).



Art. No.	Ø mm
338ST00100	1.0
338ST00150	1.5
338ST00200	2.0
338ST00250	2.5
338ST00300	3.0
338ST00350	3.5
338ST00400	4.0
338ST00450	4.5
338ST00500	5.0
338ST00550	5.5
338ST00600	6.0
338ST00650	6.5
338ST00700	7.0
338ST00750	7.5
338ST00800	8.0
338ST00850	8.5
338ST00900	9.0
338ST09500	9.5
338ST01000	10.0
338ST01100	11.0
338ST01200	12.0
338ST01300	13.0
338ST01400	14.0
338ST01500	15.0
338ST01600	16.0
338ST01700	17.0
338ST01800	18.0
338ST01900	19.0
338ST02000	20.0



Art. No.	Ø mm
338CO00300	3.0
338CO00350	3.5
338CO00400	4.0
338CO00450	4.5
338CO00500	5.0
338CO00550	5.5
338CO00600	6.0
338CO00650	6.5
338CO00700	7.0
338CO00750	7.5
338CO00800	8.0
338CO00850	8.5
338CO00900	9.0
338CO00950	9.5
338CO01000	10.0
338CO01100	11.0
338CO01200	12.0
338CO01300	13.0
338CO01400	14.0
338CO01500	15.0
338CO01600	16.0
338CO01700	17.0
338CO01800	18.0
338CO01900	19.0
338CO02000	20.0



Inch sizes are available upon request!

HSS Drill Bits DIN 345 N + DIN 340 N long



HSS DIN 345 N

Morse taper shank twist drill, right hand, steam tempered, 118° split point, individually packed in plastic tubes



Art. No.	Ø mm	Art. No.	Ø mm	Art. No.	Ø mm
345ST01000	10.0	345ST02500	25.0	345ST04000	40.0
345ST01500	10.5	345ST02550	25.5	345ST04500	40.5
345ST01100	11.0	345ST02600	26.0	345ST04100	41.0
345ST01150	11.5	345ST02650	26.5	345ST04150	41.5
345ST01200	12.0	345ST02700	27.0	345ST04200	42.0
345ST01250	12.5	345ST02750	27.5	345ST04250	42.5
345ST01300	13.0	345ST02800	28.0	345ST04300	43.0
345ST01350	13.5	345ST02850	28.5	345ST04350	43.5
345ST01400	14.0	345ST02900	29.0	345ST04400	44.0
345ST01450	14.5	345ST02950	29.5	345ST04450	44.5
345ST01500	15.0	345ST03000	30.0	345ST04500	45.0
345ST01550	15.5	345ST03050	30.5	345ST04550	45.5
345ST01600	16.0	345ST03100	31.0	345ST04600	46.0
345ST01650	16.5	345ST03150	31.5	345ST04650	46.5
345ST01700	17.0	345ST03200	32.0	345ST04700	47.0
345ST01750	17.5	345ST03250	32.5	345ST04750	47.5
345ST01800	18.0	345ST03300	33.0	345ST04800	48.0
345ST01850	18.5	345ST03350	33.5	345ST04850	48.5
345ST01900	19.0	345ST03400	34.0	345ST04900	49.0
345ST01950	19.5	345ST03450	34.5	345ST04950	49.5
345ST02000	20.0	345ST03500	35.0	345ST05000	50.0
345ST02050	20.5	345ST03350	35.5	345ST05100	51.0
345ST02100	21.0	345ST03600	36.0	345ST05200	52.0
345ST02150	21.5	345ST03650	36.5	345ST05300	53.0
345ST02200	22.0	345ST03700	37.0	345ST05400	54.0
345ST02250	22.5	345ST03750	37.5	345ST05500	55.0
345ST02300	23.0	345ST03800	38.0	345ST05600	56.0
345ST02350	23.5	345ST03850	38.5	345ST05700	57.0
345ST02400	24.0	345ST03900	39.0	345ST05800	58.0
345ST02450	24.5	345ST03950	39.5	345ST05900	59.0
				345ST06000	60.0

HSS DIN 340 N Long Series

Straight shank twist drill, right hand, roll forged, steam tempered, 118° universal point shape, packing in plastic bags of 10 pcs.



Art. No.	Ø mm
340ST00300	3.0
340ST00350	3.5
340ST00400	4.0
340ST00450	4.5
340ST00500	5.0
340ST00550	5.5
340ST00600	6.0
340ST00650	6.5
340ST00700	7.0
340ST00750	7.5
340ST00800	8.0
340ST00850	8.5
340ST00900	9.0
340ST00950	9.5
340ST01000	10.0
340ST01100	11.0
340ST01200	12.0
340ST01300	13.0
340ST01400	14.0
340ST01500	15.0
340ST01600	16.0
340ST01700	17.0
340ST01800	18.0
340ST01900	19.0
340ST02000	20.0



HSS Tin Drills, Drills with reduced shank, Drill Bits for Glass



KISTENMACHER brand HSS TIN Twist Drill Bit DIN 338

straight shank, short series, for stainless steel, right hand, ground from solid, coated, gold finish, from size 4.0 mm with laser printing „Made in Germany“, each piece in a black/red plastic wallet

Art. No.	Ø mm
338TIN00100T	1.0
338TIN00200T	2.0
338TIN00300T	3.0
338TIN00400T	4.0
338TIN00500T	5.0
338TIN00600T	6.0
338TIN00800T	8.0
338TIN01000T	10.0
338TIN01200T	12.0



KISTENMACHER brand HSS Twist Drill Bit DIN 338

short series, right hand, reduced shank to diam. 13 mm, with laser printing „Made in Germany“, 5 pcs each in a plastic bag with orange sticker



Art. No.	Ø mm
338RE01400	14.0
338RE01450	14.5
338RE01500	15.0
338RE01550	15.5
338RE01560	16.0
338RE01700	17.0
338RE01800	18.0
338RE01900	19.0
338RE02000	20.0
338RE02100	21.0

Art. No.	Ø mm
338RE02150	21.5
338RE02200	22.0
338RE02400	24.0
338RE02450	24.5
338RE02500	25.0
338RE02600	26.0
338RE02700	27.0
338RE02800	28.0
338RE03000	30.0

Glass Drill Bit, hex. shank

galvanized surface, precision diamond ground TC tip, suitable for drilling in plate glass, glass panes, bottle glass, tiles and ceramics
individually packed in PVC wallet



Art. No.	Ø mm
9500T 032	3.2
9500T 042	4.2
9500T 052	5,2
9500T 062	6,2
9500T 072	7,2
9500T 082	8,2
9500T 092	9,2
9500T 102	10,2
9500T 122	12,2
9500T 132	13,2



HSS Drill Bit Sets DIN 338



KISTENMACHER brand HSS DIN 338 drill bit set in plastic box

straight shank twist drill, short series, right hand, roll forged, steam tempered, 118° universal point shape, packed in plastic box



Art. No.	pcs/set	mm/inch	sizes
338SET6106	6	mm	2, 3, 4, 5, 6, 8
338SET2100	10	mm	1, 2, 3, 4, 5, 6, 7, 8, 9, 10
338SET2113	13	mm	1.5, 2, 2.5, 3, 3.2, 4, 4.8, 5, 5.5, 6, 6.5
338SET2119	19	mm	1, 1.5, 2, 2.5, 3, 3.5, 4, 4.5, 5, 5.5, 6, 6.5, 7, 7.5, 8, 8.5, 9, 9.5, 10
338SET2191	7	inch	1/16, 3/32, 1/8, 5/32, 3/16, 7/32, 1/4
338SET2193	13	inch	1/16, 5/64, 3/32, 7/64, 1/8, 9/64, 5/32, 11/64, 3/16, 13/64, 7/32, 15/64, 1/4
338SET2192	10	inch	1/16 - 1/4 1/64 messing, without 11/64, 13/64, 15/64

KISTENMACHER brand HSS DIN 338 drill bit set in metal box

straight shank twist drill, short series, right hand, roll forged, steam tempered, 118°



Art. No.	pcs/set	mm/inch	sizes
338SET2519	19	mm	1, 1.5, 2, 2.5, 3, 3.5, 4, 4.5, 5, 5.5, 6, 6.5, 7, 7.5, 8, 8.5, 9, 9.5, 10
338SET2525	25	mm	1, 1.5, 2, 2.5, 3, 3.5, 4, 4.5, 5, 5.5, 6, 6.5, 7, 7.5, 8, 8.5, 9, 9.5, 10, 10.5, 11, 11.5, 12.0, 12.5, 13
338SET0273	21	inch	1/16, 5/64, 3/32, 7/64, 1/8, 9/64, 5/32, 11/64, 3/16, 13/64, 7/32, 15/64, 1/4, 17/64, 9/32, 19/64, 5/16, 21/64, 11/32, 23/64, 3/8
338SET0274	29	inch	1/16, 5/64, 3/32, 7/64, 1/8, 9/64, 5/32, 11/64, 3/16, 13/64, 7/32, 15/64, 1/4, 17/64, 9/32, 19/64, 5/16, 21/64, 11/32, 23/64, 3/8, 25/64, 13/32, 27/64, 7/16, 29/64, 15/32, 31/64, 1/2

Mortise Bits, Screw Extractors & Planer Blades

Mortise Bits (No. 395)

with double cutter and chip breaking grooves - cylindrical shank for use in bushing for right and left hand

- A) right cutting** - shaft 16 x 50 mm
- B) left cutting** - shaft 16 x 50 mm
- C) right cutting** - shaft 13 x 50 mm
- D) left cutting** - shaft 13 x 50 mm



Art. No. A	Art. No. B	Art. No. C	Art. No. D	size/length (mm)
395/16/6r	395/16/6l	395/13/6r	395/13/6l	6 x 120
395/16/7r	395/16/7l	395/13/7r	395/13/7l	7 x 125
395/16/8r	395/16/8l	395/13/8r	395/13/8l	8 x 130
395/16/9r	395/16/9l	395/13/9r	395/13/9l	9 x 135
395/16/10r	395/16/10l	395/13/10r	395/13/10l	10 x 140
395/16/11r	395/16/11l	395/13/11r	395/13/11l	11 x 145
395/16/12r	395/16/12l	395/13/12r	395/13/12l	12 x 150
395/16/13r	395/16/13l	395/13/13r	395/13/13l	13 x 155
395/16/14r	395/16/14l	395/13/14r	395/13/14l	14 x 160
395/16/15r	395/16/15l	395/13/15r	395/13/15l	15 x 165
395/16/16r	395/16/16l	395/13/16r	395/13/16l	16 x 170
395/16/18r	395/16/18l	395/13/18r	395/13/18l	18 x 180
395/16/20r	395/16/20l	395/13/20r	395/13/20l	20 x 185
395/16/22r	395/16/22l	395/13/22r	395/13/22l	22 x 195
395/16/24r	395/16/24l	395/13/24r	395/13/24l	24 x 200
395/16/26r	395/16/26l	395/13/26r	395/13/26l	26 x 210
395/16/30r	395/16/30l	395/13/30r	395/13/30l	30 x 220

KISTENMACHER brand Screw Extractors packing in plastic box



Art. No.	size	pcs / set
5015 (AB-A)	1 to 5	5 pcs set
5016 (AB-B)	1 to 6	6 pcs set
5018 (AB-C)	1 to 8	8 pcs set

KISTENMACHER brand Planer Blades Chrome-vanadium steel (C75 48-50 HRC)



Art. No.	size/length (mm)
250353	10" / 250 x 35 x 3
300353	12" / 300 x 35 x 3
350353	14" / 350 x 35 x 3
400303	16" / 400 x 30 x 3
400353	16" / 400 x 35 x 3
450353	18" / 450 x 35 x 3
450303	20" / 500 x 30 x 3
500353	20" / 500 x 35 x 3
550353	22" / 550 x 35 x 3
550303	24" / 600 x 30 x 3
600353	24" / 600 x 35 x 3
800353	36" / 800 x 35 x 3

Countersink - Step Drills

Precision - Countersink, HSS
solid carbide similar DIN 335 C 90 degrees

3-cutting edges-geometry

we recommend HM-countersinks when machining
 tough materials, high-strength steels, titanium or



Art. No.	Ø head (mm)	shank (mm)	mm	smallest Ø (mm)	Art. No.	Ø head (mm)	shank (mm)	mm	smallest Ø (mm)	Art. No.	Ø head (mm)	shank (mm)	mm	smallest Ø (mm)
1030043	4,3	4	40	1,3	1030094	9,4	6	50	2,2	1030205	20,5	10	67	3,8
1030050	5,0	4	40	1,5	1030100	10,0	6	50	2,5	1030250	23,0	10	67	3,8
1030053	5,3	4	40	1,5	1030104	10,4	6	50	2,5	1030260	26,0	10	67	3,8
1030058	5,8	5	45	1,5	1030115	11,5	8	56	2,8	1030280	28,0	12	71	4,0
1030060	6,0	5	45	1,5	1030124	12,4	8	56	2,8	1030300	30,0	12	71	4,2
1030063	6,3	5	45	1,5	1030134	13,4	8	56	2,9	1030310	31,0	12	71	4,2
1030070	7,0	6	50	1,8	1030144	14,4	10	60	3,2	1030400	40,0	13	80	6,5
1030073	7,3	6	50	1,8	1030150	15,0	10	60	3,2	1030500	50,0	13	85	12,0
1030080	8,0	6	50	2,0	1030165	16,5	10	60	3,2					
1030083	8,3	6	50	2,0	1030190	19,0	10	63	3,5					

Precision - Countersink HSS Set

solid carbide similar DIN 335 C 90 degrees

3-cutting edges-geometry

we recommend HM-countersinks when machining

Art. No.	pcs per set	range Ø (mm)	sizes
1030001	6	6,0 - 19,0	6,0 - 8,0 - 10,0 - 11,5 - 15,0 - 19,0 mm
1030002	6	6,3 - 20,5	6,3 - 8,3 - 10,4 - 12,4 - 16,5 - 20,5 mm
1030003	7	6,3 - 25,0	6,3 - 8,3 - 10,4 - 12,4 - 16,5 - 20,5 - 25,0 mm
1030004	7	6,0 - 25,0	6,0 - 8,0 - 10,0 - 11,5 - 15,0 - 19,0 - 25,0 mm



Precision - HSS Countersink, 1/4" hexagon shank

solid carbide similar DIN 3126 C 6,3 90 degrees

Art. No.	drill-range	shank	mm
1570/8	8 mm	4 mm	37
1570/10	10 mm	5 mm	41
1570/12	12 mm	6 mm	45
1570/16	16 mm	8 mm	49
1570/20	20 mm	10 mm	50



Precision - HSS Step Drill 2mm rising

2-cutting edges-geometry, straight fluted

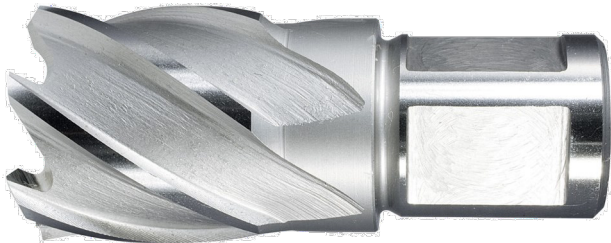
Art. No.	drill-range	shank	mm	steps
1140411	4 - 12 mm	6 mm	62	5
1140420	4 - 20 mm	8 mm	73	9
1140630	6 - 30 mm	10 mm	95	13



HSS Core Drills

ALFRA - Rotabest - HSS BASIC CORE DRILLS

with weldon shank 19.0 mm, 2 driving surfaces,
internal bore 6.35 mm
special super high speed steel
polished section: pre- and post cutter



Art. No.	cutting depth	dia.	Art. No.	cutting depth	dia.
1907012025	30 mm	12 mm	1907033025	30 mm	33 mm
1907013025	30 mm	13 mm	1907034025	30 mm	34 mm
1907014025	30 mm	14 mm	1907035025	30 mm	35 mm
1907015025	30 mm	15 mm	1907036025	30 mm	36 mm
1907016025	30 mm	16 mm	1907037025	30 mm	37 mm
1907017025	30 mm	17 mm	1907038025	30 mm	38 mm
1907018025	30 mm	18 mm	1907039025	30 mm	39 mm
1907019025	30 mm	19 mm	1907040025	30 mm	40 mm
1907020025	30 mm	20 mm	1907041025	30 mm	41 mm
1907021025	30 mm	21 mm	1907042025	30 mm	42 mm
1907022025	30 mm	22 mm	1907043025	30 mm	43 mm
1907023025	30 mm	23 mm	1907044025	30 mm	44 mm
1907024025	30 mm	24 mm	1907045025	30 mm	45 mm
1907025025	30 mm	25 mm	1907046025	30 mm	46 mm
1907026025	30 mm	26 mm	1907047025	30 mm	47 mm
1907027025	30 mm	27 mm	1907048025	30 mm	48 mm
1907028025	30 mm	28 mm	1907049025	30 mm	49 mm
1907029025	30 mm	29 mm	1907050025	30 mm	50 mm
1907030025	30 mm	30 mm	1907052025	30 mm	52 mm
1907031025	30 mm	31 mm	1907055025	30 mm	55 mm
1907032025	30 mm	32 mm	1907060025	30 mm	60 mm

Art. No.	cutting depth	dia.	Art. No.	cutting depth	dia.
1907012050	50 mm	12 mm	1907037050	50 mm	37 mm
1907013050	50 mm	13 mm	1907038050	50 mm	38 mm
1907014050	50 mm	14 mm	1907039050	50 mm	39 mm
1907015050	50 mm	15 mm	1907040050	50 mm	40 mm
1907016050	50 mm	16 mm	1907041050	50 mm	41 mm
1907017050	50 mm	17 mm	1907042050	50 mm	42 mm
1907018050	50 mm	18 mm	1907043050	50 mm	43 mm
1907019050	50 mm	19 mm	1907044050	50 mm	44 mm
1907020050	50 mm	20 mm	1907045050	50 mm	45 mm
1907021050	50 mm	21 mm	1907046050	50 mm	46 mm
1907022050	50 mm	22 mm	1907047050	50 mm	47 mm
1907023050	50 mm	23 mm	1907048050	50 mm	48 mm
1907024050	50 mm	24 mm	1907049050	50 mm	49 mm
1907025050	50 mm	25 mm	1907050050	50 mm	50 mm
1907026050	50 mm	26 mm	1907051050	50 mm	51 mm
1907027050	50 mm	27 mm	1907052050	50 mm	52 mm
1907028050	50 mm	28 mm	1907053050	50 mm	53 mm
1907029050	50 mm	29 mm	1907054050	50 mm	54 mm
1907030050	50 mm	30 mm	1907055050	50 mm	55 mm
1907031050	50 mm	31 mm	1907056050	50 mm	56 mm
1907032050	50 mm	32 mm	1907057050	50 mm	57 mm
1907033050	50 mm	33 mm	1907058050	50 mm	58 mm
1907034050	50 mm	34 mm	1907059050	50 mm	59 mm
1907035050	50 mm	35 mm	1907060050	50 mm	60 mm
1907036050	50 mm	36 mm			



Art. No.	ejector pin
1926500	6.35 x 77 mm



Art. No.	ejector pin
1950500	6.35 x 102 mm

TCT Core Drills

ALFRA - Rotabest - TCT CORE DRILLS

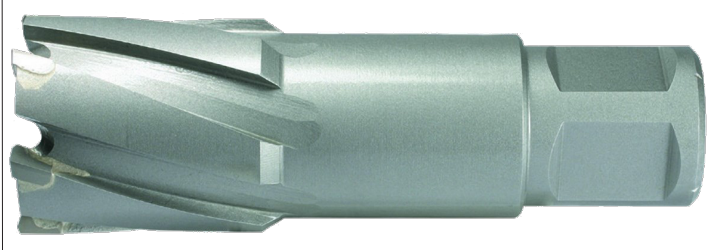
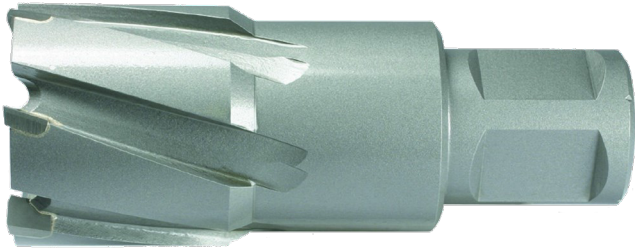
with weldon shank 19.0 mm

internal bore: Ø 14 - 17 mm = 6.35 mm

Ø 18 - 50 mm = 8.0 mm

polished section: pre - middle - post cutter

for the highest standards in cutting and lifespan



Art. No.	cutting depth	dia.
2003014035	35 mm	14 mm
2003015035	35 mm	15 mm
2003016035	35 mm	16 mm
2003017035	35 mm	17 mm
2003018035	35 mm	18 mm
2003019035	35 mm	19 mm
2003020035	35 mm	20 mm
2003021035	35 mm	21 mm
2003022035	35 mm	22 mm
2003023035	35 mm	23 mm
2003024035	35 mm	24 mm
2003025035	35 mm	25 mm
2003026035	35 mm	26 mm
2003027035	35 mm	27 mm
2003028035	35 mm	28 mm
2003029035	35 mm	29 mm
2003030035	35 mm	30 mm
2003031035	35 mm	31 mm
2003032035	35 mm	32 mm
2003033035	35 mm	33 mm
2003034035	35 mm	34 mm
2003035035	35 mm	35 mm

Art. No.	cutting depth	dia.	Art. No.	cutting depth	dia.
2003014050	50 mm	14 mm	2003033050	50 mm	33 mm
2003015050	50 mm	15 mm	2003034050	50 mm	34 mm
2003016050	50 mm	16 mm	2003035050	50 mm	35 mm
2003017050	50 mm	17 mm	2003036050	50 mm	36 mm
2003018050	50 mm	18 mm	2003037050	50 mm	37 mm
2003019050	50 mm	19 mm	2003038050	50 mm	38 mm
2003020050	50 mm	20 mm	2003039050	50 mm	39 mm
2003021050	50 mm	21 mm	2003040050	50 mm	40 mm
2003022050	50 mm	22 mm	2003041050	50 mm	41 mm
2003023050	50 mm	23 mm	2003042050	50 mm	42 mm
2003024050	50 mm	24 mm	2003043050	50 mm	43 mm
2003025050	50 mm	25 mm	2003044050	50 mm	44 mm
2003026050	50 mm	26 mm	2003045050	50 mm	45 mm
2003027050	50 mm	27 mm	2003046050	50 mm	46 mm
2003028050	50 mm	28 mm	2003047050	50 mm	47 mm
2003029050	50 mm	29 mm	2003048050	50 mm	48 mm
2003030050	50 mm	30 mm	2003049050	50 mm	49 mm
2003031050	50 mm	31 mm	2003050050	50 mm	50 mm
2003032050	50 mm	32 mm			



Art. No.	ejector pin
1935500	for Ø 14-17 mm, 6.35 x 87 mm
2001500	for Ø 18 - 50 mm, 8 x 87 mm



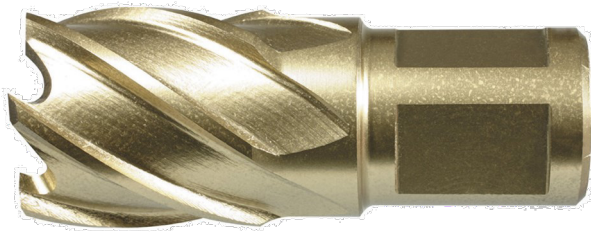
Art. No.	ejector pin
1950500	for Ø 14-17 mm, 6.35 x 102 mm
2001501	for Ø 18 - 50 mm, 8 x 102 mm

HSS Core Drills



ALFRA - Rotabest - HSS-CO ECO CORE DRILLS

with weldon shank 19.0 mm, 2 driving surfaces,
 internal bore 6.35 mm
 cutting depth Ø 110 mm: 8 mm
 special super high speed steel cobalt
 polished section: pre- and post cutter



Art. No.	cutting depth	dia.	Art. No.	cutting depth	dia.
1901012025	30 mm	12 mm	1901033025	30 mm	33 mm
1901013025	30 mm	13 mm	1901034025	30 mm	34 mm
1901014025	30 mm	14 mm	1901035025	30 mm	35 mm
1901015025	30 mm	15 mm	1901036025	30 mm	36 mm
1901016025	30 mm	16 mm	1901037025	30 mm	37 mm
1901017025	30 mm	17 mm	1901038025	30 mm	38 mm
1901018025	30 mm	18 mm	1901039025	30 mm	39 mm
1901019025	30 mm	19 mm	1901040025	30 mm	40 mm
1901020025	30 mm	20 mm	1901041025	30 mm	41 mm
1901021025	30 mm	21 mm	1901042025	30 mm	42 mm
1901022025	30 mm	22 mm	1901043025	30 mm	43 mm
1901023025	30 mm	23 mm	1901044025	30 mm	44 mm
1901024025	30 mm	24 mm	1901045025	30 mm	45 mm
1901025025	30 mm	25 mm	1901046025	30 mm	46 mm
1901026025	30 mm	26 mm	1901047025	30 mm	47 mm
1901027025	30 mm	27 mm	1901048025	30 mm	48 mm
1901028025	30 mm	28 mm	1901049025	30 mm	49 mm
1901029025	30 mm	29 mm	1901050025	30 mm	50 mm
1901030025	30 mm	30 mm	1901052025	30 mm	52 mm
1901031025	30 mm	31 mm	1901055025	30 mm	55 mm
1901032025	30 mm	32 mm	1901060025	30 mm	60 mm

Art. No.	cutting depth	dia.	Art. No.	cutting depth	dia.
1901012050	50 mm	12 mm	1901037050	50 mm	37 mm
1901013050	50 mm	13 mm	1901038050	50 mm	38 mm
1901014050	50 mm	14 mm	1901039050	50 mm	39 mm
1901015050	50 mm	15 mm	1901040050	50 mm	40 mm
1901016050	50 mm	16 mm	1901041050	50 mm	41 mm
1901017050	50 mm	17 mm	1901042050	50 mm	42 mm
1901018050	50 mm	18 mm	1901043050	50 mm	43 mm
1901019050	50 mm	19 mm	1901044050	50 mm	44 mm
1901020050	50 mm	20 mm	1901045050	50 mm	45 mm
1901021050	50 mm	21 mm	1901046050	50 mm	46 mm
1901022050	50 mm	22 mm	1901047050	50 mm	47 mm
1901023050	50 mm	23 mm	1901048050	50 mm	48 mm
1901024050	50 mm	24 mm	1901049050	50 mm	49 mm
1901025050	50 mm	25 mm	1901050050	50 mm	50 mm
1901026050	50 mm	26 mm	1901051050	50 mm	51 mm
1901027050	50 mm	27 mm	1901052050	50 mm	52 mm
1901028050	50 mm	28 mm	1901053050	50 mm	53 mm
1901029050	50 mm	29 mm	1901054050	50 mm	54 mm
1901030050	50 mm	30 mm	1901055050	50 mm	55 mm
1901031050	50 mm	31 mm	1901056050	50 mm	56 mm
1901032050	50 mm	32 mm	1901057050	50 mm	57 mm
1901033050	50 mm	33 mm	1901058050	50 mm	58 mm
1901034050	50 mm	34 mm	1901059050	50 mm	59 mm
1901035050	50 mm	35 mm	1901060050	50 mm	60 mm
1901036050	50 mm	36 mm			



Art. No.	ejector pin
1926500	6.35 x 77 mm



Art. No.	ejector pin
1950500	6.35 x 102 mm

Masonry Drill Bits

Masonry Drill Bit DIN 8039

Masonry drill, sandblasted, tungsten carbide tip, rolled flute, for rotary and percussion, individually packed in PVC wallet



Art. No. standard length	Ø mm
3000T 030	3.0
3000T 040	4.0
3000T 050	5.0
3000T 055	5.5
3000T 060	6.0
3000T 065	6.5
3000T 070	7.0
3000T 080	8.0
3000T 090	9.0
3000T 100	10.0
3000T 110	11.0
3000T 120	12.0
3000T 130	13.0
3000T 140	14.0
3000T 150	15.0
3000T 160	16.0
3000T 180	18.0
3000T 200	20.0
3000T 220	22.0
3000T 240	24.0
3000T 250	25.0

Art. No. 150 mm	Ø mm
3150T 050	5.0
3150T 055	5.5
3150T 060	6.0
3150T 065	6.5
3150T 070	7.0
3150T 080	8.0
3150T 100	10.0

Art. No. 200 mm	Ø mm
3200T 050	5.0
3200T 055	5.5
3200T 060	6.0
3200T 065	6.5
3200T 070	7.0
3200T 080	8.0
3200T 100	10.0
3200T 110	11.0
3200T 120	12.0
3200T 130	13.0
3200T 140	14.0
3200T 150	15.0
3200T 160	16.0



Masonry Drill Bit Long Version

Masonry drill, high temperature carbide tip, sand blasted, rolled flute, rotary and percussion, individually packed in PVC wallet

available in 400 mm and 600 mm length

Art. No. 400 mm	Ø mm
4800T 060	6.0
4800T 065	6.5
4800T 080	8.0
4800T 100	10.0
4800T 120	12.0
4800T 130	13.0
4800T 140	14.0
4800T 150	15.0
4800T 160	16.0
4800T 180	11.0
4800T 190	12.0
4800T 200	13.0
4800T 220	14.0
4800T 240	15.0
4800T 250	16.0
4800T 260	17.0
4800T 280	18.0
4800T 300	19.0
4800T 320	20.0

Art. No.	Ø mm
4900T 080	8.0
4900T 100	10.0
4900T 120	12.0
4900T 130	13.0
4900T 140	14.0
4900T 150	15.0
4900T 160	16.0
4900T 180	11.0
4900T 190	12.0
4900T 200	13.0
4900T 220	14.0
4900T 240	15.0
4900T 250	16.0
4900T 260	17.0
4900T 280	18.0
4900T 300	19.0
4900T 320	20.0



Concrete & Granite Drill Bits



Concrete (SAPHIR)

Masonry drill for percussion, high temperature brazed tungsten carbide tip, sand blasted, for concrete, natural stone, brick and marble; individually packed in PVC wallet



Art. No. standard length	Ø mm	Art. No. 200 mm extra long	Ø mm
3500T 030	3.0		
3500T 040	4.0		
3500T 050	5.0	3520T 050	5.0
3500T 055	5.5		
3500T 060	6.0	3520T 060	6.0
3500T 065	6.5	3520T 065	6.5
3500T 070	7.0	3520T 070	7.0
3500T 080	8.0	3520T 080	8.0
3500T 090	9.0		
3500T 100	10.0	3520T 100	10.0
		3520T 110	11.0
3500T 120	12.0	3520T 120	12.0
3500T 130	13.0	3520T 130	13.0
3500T 140	14.0	3520T 140	14.0
3500T 150	15.0	3520T 150	15.0
3500T 160	16.0	3520T 160	16.0
3500T 180	18.0		
3500T 200	20.0		
3500T 220	22.0		
3500T 240	24.0		
3500T 250	25.0		

Art. No. 150 mm extra long	Ø mm
3510T 050	5.0
3510T 060	6.0
3510T 065	6.5
3510T 070	7.0
3510T 080	8.0
3510T 100	10.0



Granite (RUBIN)

Heavy duty hammer drill, high temperature brazed tungsten carbide tip, precision milled bicolor finish, for granite, marble and concrete; individually packed in PVC wallet



Art. No. standard length	Ø mm	Art. No. 200 mm extra long	Ø mm
3400T 030	3.0	3420T 050	5.0
3400T 040	4.0	3420T 060	6.0
3400T 050	5.0	3420T 065	6.5
3400T 055	5.5	3420T 070	7.0
3400T 060	6.0	3420T 080	8.0
3400T 065	6.5	3420T 100	10.0
3400T 070	7.0	3420T 110	11.0
3400T 080	8.0	3420T 120	12.0
3400T 090	9.0	3420T 130	13.0
3400T 100	10.0	3420T 140	14.0
3400T 110	11.0	3420T 150	15.0
3400T 120	12.0	3420T 160	16.0
3400T 130	13.0		
3400T 140	14.0		
3400T 150	15.0		
3400T 160	16.0		
3400T 180	18.0		

Art. No. 150 mm extra long	Ø mm
3415T 050	5.0
3415T 060	6.0
3415T 065	6.5
3415T 070	7.0
3415T 080	8.0
3415T 100	10.0



Drill Bit Sets



Masonry Drill Bit Sets, sand blasted

each set packed in plastic box

Art. No.	pcs/set	mm/inch	Sizes
1 3151	4	mm	4, 5, 6, 8
1 3152	4	mm	5, 6, 8, 10
1 3153	5	mm	4, 5, 6, 7, 8
1 3154	5	mm	4, 5, 6, 8, 10
1 3100	8	mm	3, 4, 5, 6, 7, 8, 9, 10



Combi Drill Bit Sets

each set in plastic box

Art. No.	pcs/set	mm/inch	sizes HSS	sizes stone (sandblasted)	sizes wood
300.190.180	9	mm	5, 6, 8	5, 6, 8	5, 6, 8



Machine Wood Working Drill Bit Sets

each set in multipack

Art. No.	pcs/set	mm/inch	sizes
180.350.410	5	mm	4, 5, 6, 8, 10
180.370.310	7	mm	3, 4, 5, 6, 7, 8, 10



KISTENMACHER brand Universal Drill Sets - SAPHIR

for percussion, concrete, marble
each set in plastic box

Art. No.	pcs/set	mm/inch	sizes
3518-3	4	mm	5,6,8,10
3518-2	5	mm	4,5,6,8,10
3518-1	7	mm	4,5,6,7,8,9,10



KISTENMACHER brand Universal Drill Sets - RUBIN

for percussion, granite, marble
each set in plastic box

Art. No.	pcs/set	mm/inch	sizes
3434153	4	mm	5, 6, 8, 10
3434163	5	mm	4, 5, 6, 8, 10
3418-1	7	mm	4, 5, 6, 7, 8, 9, 10





SDS Plus Drill Bits

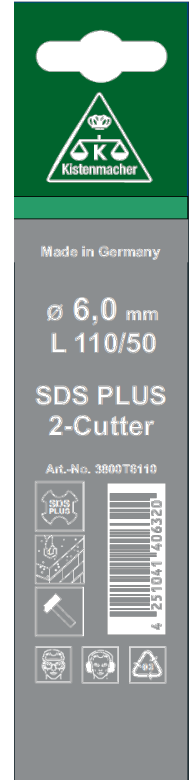
KISTENMACHER brand SDS PLUS Rotary Hammer Drill Bit

with 2 flutes, each piece on a plastic clip hanger
(optionally in PVC wallet)

Art. No. **3800H**



Art. No.	Ø mm length	Art. No.	Ø mm length	Art. No.	Ø mm length
3800H 4 x 110	4 x 110	3800H 10 x 260	10 x 260	3800H 16 x 200	16 x 200
3800H 4 x 160	4 x 160	3800H 10 x 310	10 x 310	3800H 16 x 260	16 x 260
3800H 5 x 110	5 x 110	3800H 10 x 350	10 x 350	3800H 16 x 300	16 x 300
3800H 5 x 160	5 x 160	3800H 10 x 460	10 x 460	3800H 16 x 450	16 x 450
3800H 5 x 210	5 x 210	3800H 10 x 600	10 x 600	3800H 16 x 600	16 x 600
3800H 5 x 310	5 x 310	3800H 11 x 160	11 x 160	3800H 18 x 200	18 x 200
3800H 6 x 110	6 x 110	3800H 11 x 210	11 x 210	3800H 18 x 250	18 x 250
3800H 6 x 160	6 x 160	3800H 12 x 160	12 x 160	3800H 18 x 300	18 x 300
3800H 6 x 210	6 x 210	3800H 12 x 200	12 x 200	3800H 18 x 450	18 x 450
3800H 7 x 110	7 x 110	3800H 12 x 260	12 x 260	3800H 18 x 600	18 x 600
3800H 7 x 160	7 x 160	3800H 12 x 300	12 x 300	3800H 19 x 200	19 x 200
3800H 7 x 210	7 x 210	3800H 12 x 450	12 x 450	3800H 20 x 200	20 x 200
3800H 8 x 110	8 x 110	3800H 12 x 600	12 x 600	3800H 20 x 300	20 x 300
3800H 8 x 160	8 x 160	3800H 13 x 160	13 x 160	3800H 20 x 450	20 x 450
3800H 8 x 210	8 x 210	3800H 13 x 200	13 x 200	3800H 20 x 600	20 x 600
3800H 8 x 260	8 x 260	3800H 13 x 260	13 x 260	3800H 20 x 1000	20 x 1000
3800H 8 x 310	8 x 310	3800H 13 x 450	13 x 450	3800H 22 x 250	22 x 250
3800H 8 x 460	8 x 460	3800H 14 x 160	14 x 160	3800H 22 x 300	22 x 300
3800H 9 x 160	9 x 160	3800H 14 x 200	14 x 200	3800H 22 x 450	22 x 450
3800H 9 x 210	9 x 210	3800H 14 x 260	14 x 260	3800H 22 x 600	22 x 600
3800H 9 x 260	9 x 260	3800H 14 x 300	14 x 300	3800H 24 x 250	24 x 250
3800H 9 x 310	9 x 310	3800H 14 x 450	14 x 450	3800H 24 x 450	24 x 450
3800H 9 x 410	9 x 410	3800H 14 x 600	14 x 600	3800H 25 x 250	19 x 200
3800H 10 x 110	10 x 110	3800H 15 x 160	15 x 160	3800H 25 x 450	19 x 200
3800H 10 x 160	10 x 160	3800H 15 x 260	15 x 260	3800H 26 x 450	26 x 450
3800H 10 x 210	10 x 210	3800H 16 x 160	16 x 160	3800H 30 x 450	30 x 450



KISTENMACHER brand SDS-4-PLUS Rotary Hammer Drill Bit

with 4 flutes, each piece on a plastic clip hanger
(optionally in PVC wallet)

Art. No. **3800H4**



Art. No.	Ø mm length	Art. No.	Ø mm length	Art. No.	Ø mm length
3800H4 5 x 110	5 x 110	3800H4 8 x 160	8 x 160	3800H4 10 x 310	10 x 310
3800H4 5 x 160	5 x 160	3800H4 8 x 210	8 x 210	3800H4 10 x 460	10 x 460
3800H4 5 x 210	5 x 210	3800H4 8 x 260	8 x 260	3800H4 12 x 160	12 x 160
3800H4 6 x 110	6 x 110	3800H4 8 x 310	8 x 310	3800H4 12 x 210	12 x 210
3800H4 6 x 160	6 x 160	3800H4 8 x 460	8 x 460	3800H4 12 x 260	12 x 260
3800H4 6 x 210	6 x 210	3800H4 10 x 160	10 x 160	3800H4 12 x 310	12 x 310
3800H4 6 x 260	6 x 260	3800H4 10 x 210	10 x 210	3800H4 12 x 450	12 x 450
3800H4 8 x 110	8 x 110	3800H4 10 x 260	10 x 260		

SDS plus - SDS max Accessories



SDS PLUS Chisel, sandblasted

for rotary hammer drills with
SDS-plus chuck

Pointed

Art. No. **3801H**

250 mm



Flat

Art. No. **3802H**

250 mm

20 mm width



Concrete Core Cutter - SDS - max Shank

for rotary hammer drills weighing 5 kg or more
with SDS-max or 2-slot chuck; simple and
efficient handling due to one-piece tool design,
chuck of adapters and centring drills is no
longer necessary



Art. No.	Ø mm	length (mm)	Art. No.	Ø mm	length (mm)
7330	40	310	7343	55	990
7331	40	550	7338	65	310
7332	45	310	7339	65	550
7333	45	550	7344	65	990
7342	45	990	7340	80	310
7336	55	310	7341	80	550
7337	55	550	7345	80	990



Hollow Hammer Core Bit

with integrated SDS-max shank and centering
drill bit taper 1:20 for rotary hammer drills on
min. 5 kg with SDS-max chuck



Center Drill Bit - Taper Shank 1:20

10 x 120 mm

Art. No. : **1143**



Art. No.	Ø mm	length (mm)	Art. No.	Ø mm	length (mm)
7101	40	290	7108	80	550
7102	40	550	7109	90	290
7103	50	290	7110	90	550
7104	50	550	7111	100	290
7105	68	290	7112	100	550
7106	68	550	7113	125	550
7107	80	290	7114	150	550



Drift Keys

Art. No. : **7006**



SDS + Drill Bits for Wood Working



Kistenmacher brand SDS Plus Drill Set

5 pcs. set, packed in PVC box

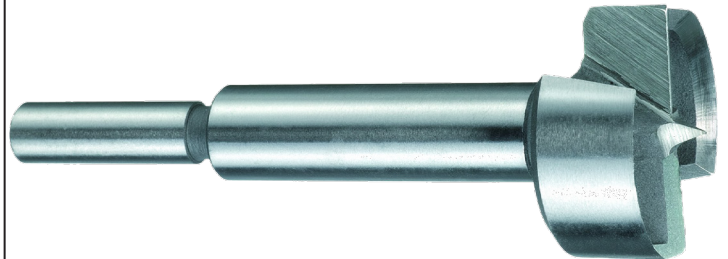


Art. No.	contents
3810-5	5x110 - 6x110 - 6x160 - 8x160 - 10x160 mm
3810-7	5x110 - 6x110 - 8x110 - 6x160 - 8x160 -

Forstner Bit Basic

Traditional type with center point and two main cutting edges

individually packed in PVC tubes



Art. No.	Ø mm	Art. No.	Ø mm
6500100	10,0	6500280	28,0
6500120	12,0	6500300	30,0
6500140	14,0	6500320	32,0
6500150	15,0	6500340	34,0
6500160	16,0	6500350	35,0
6500180	18,0	6500360	36,0
6500200	20,0	6500380	38,0
6500220	22,0	6500400	40,0
6500240	24,0	6500450	45,0
6500250	25,0	6500500	50,0
6500260	26,0		

Wood Working Drill - Form B

Made of high quality CV steel, CNC precision grinded center point, bicolour finish, optimized flute geometry for quick chip ejection

individually packed in PVC wallet



Art. No.	Ø mm	Art. No.	Ø mm
6000T 030	3.0	6000T 140	14.0
6000T 040	4.0	6000T 150	15.0
6000T 050	5.0	6000T 150	16.0
6000T 060	6.0	6000T 150	18.0
6000T 070	7.0	6000T 150	20.0
6000T 080	8.0	6000T 150	22.0
6000T 090	9.0	6000T 150	24.0
6000T 100	10.0	6000T 150	25.0
6000T 110	11.0	6000T 150	26.0
6000T 120	12.0	6000T 150	28.0
6000T 130	13.0	6000T 150	30.0

Wood Working Drill

Made of high quality CV steel, CNC precision grinded center point, bicolour finish, optimized flute geometry for quick chip ejection

individually packed in PVC wallet



available in 230 mm and 460 mm length

Art. No. 230 mm	Ø mm	Art. No. 460 mm	Ø mm
6250T 060	6.0		
6250T 080	8.0	6400T 080	8.0
6250T 100	10.0	6400T 100	10.0
6250T 120	12.0	6400T 120	12.0
6250T 140	14.0	6400T 140	14.0
6250T 160	16.0	6400T 160	16.0
6250T 180	18.0	6400T 180	18.0
6250T 200	20.0	6400T 200	20.0